

351 LAKESHORE RD W
OAKVILLE L6K1G3
Your Realtor Withhearts

Victor Vuong
Broker

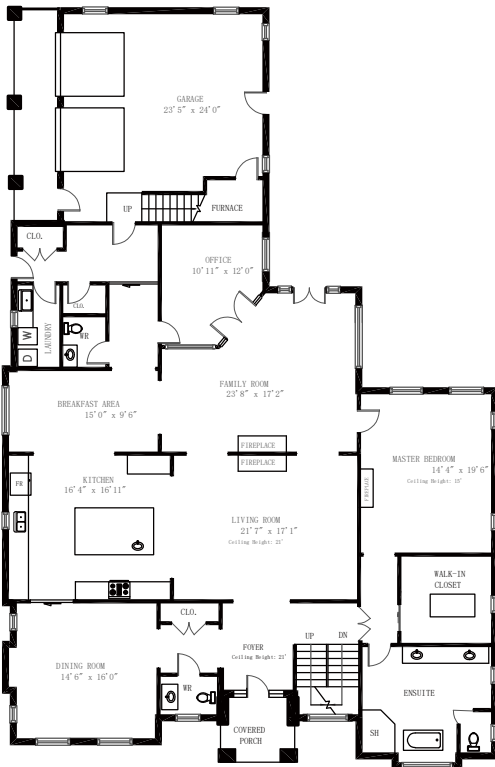
Jennifer Yang
Sales Rep

Wayne Xu
Sales Rep

Antony Han
Broker

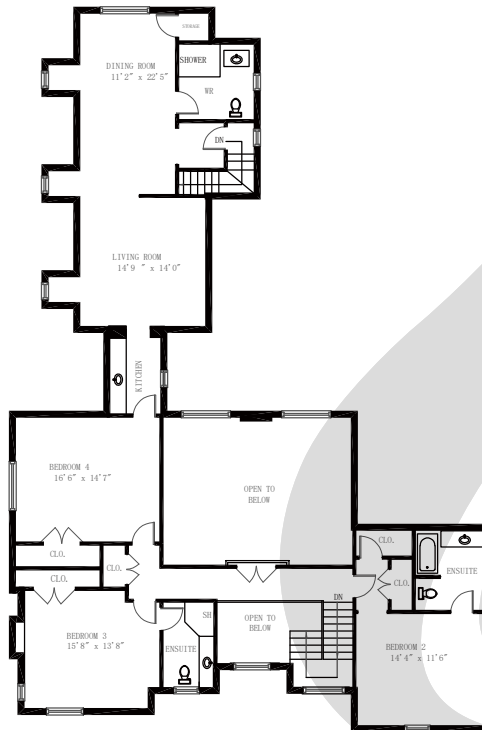
∞ Floor Plan ∞

Total Floor Area : 8505 sq.ft.



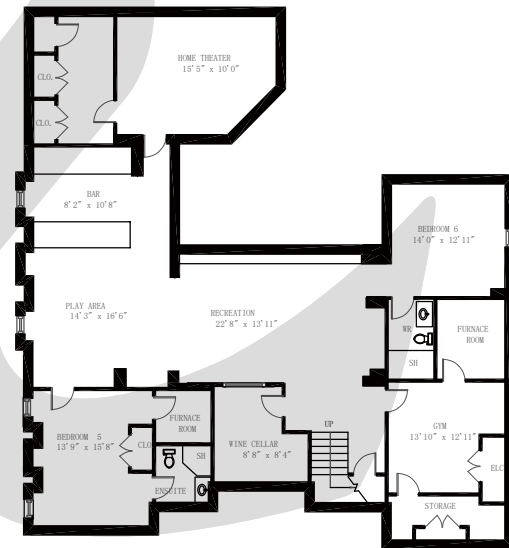
MAIN FLOOR (3231 sq. ft.)

Ceiling Height: 10'



SECOND FLOOR (2377 sq. ft.)

Ceiling Height: 10'



LOWER FLOOR (2897 sq. ft.)

Ceiling Height: 9'

Gross Floor Area Above Grade (GFA) : 5608 sq. ft.

THIS FLOOR PLAN IS PROVIDED FOR ILLUSTRATIVE PURPOSES ONLY. BUYER TO VERIFY MEASUREMENTS.